

CERTIFICATE OF LOCATION OF GOVERNMENT CORNER

NORTHEAST Corner of Section 14, Township 107, Range 39, 5TH P.M.

STATE OF MINNESOTA, County of MURRAY

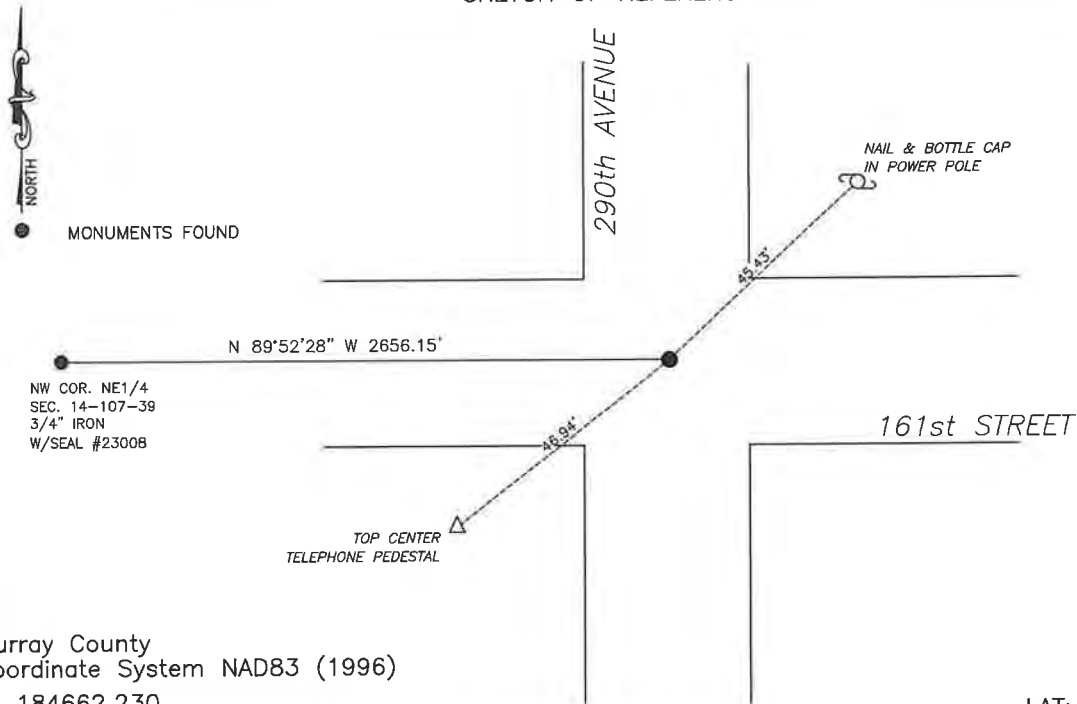
At the corner location shown on the sketch:

☒ On 4/3/2025 found a 1/2" TWISTED IRON ROD
DATE

☒ left monument as found, ☐ lowered monument, ☐ removed monument (explain)

☐ On _____ placed a _____
DATE

SKETCH OF REFERENCE TIES



Murray County
Coordinate System NAD83 (1996)

N: 184662.230
E: 574696.044

WGS84
LAT: 44°04'47.7479"
LON: -95°28'56.7989"

Statement of evidence relative to this corner location is on back of page.

I hereby certify that this document and the data contained herein was prepared by me or under my direct supervision.

Daniel L. Bueltel
License No. 43844

6/19/2025
DATE

JUN 27 2025

MURRAY COUNTY RECORDER

Statement of Evidence

NORTHEAST CORNER OF SECTION 14, T107N, R39W OF THE 5th P.M.

In July of 1861, J.W. Myers surveyed the township lines.

In September of 1861, L. Brockmann subdivided the township.

April 10, 1907 J.W. Woolstencroft used the corner but does not note what it is.

In 1954 John Sorenson located the corner but did not state what was at the corner.

County records dated April 17, 1992 note a $\frac{1}{2}$ " iron pin located at the corner.

County records dated June 12, 2012 notes a $\frac{3}{4}$ " pipe at the corner.

On August 27, 2020 Westwood Professional Services located a $\frac{1}{2}$ " square iron at the corner that fit one of the ties from 1954 and notes that coordinates from 2012 appear to be off.

On April 3, 2025 Bueltel-Moseng Land Surveying found a $\frac{1}{2}$ " twisted iron rod.